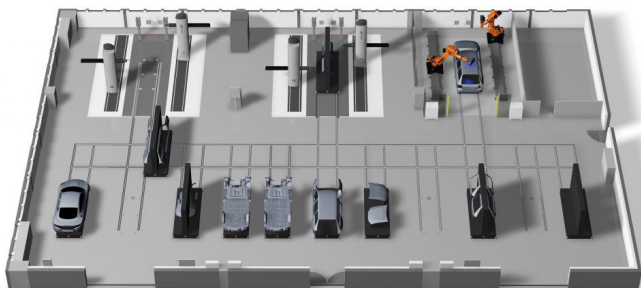


A thousand ideas, but zero capacity? Let us handle it

Do you have excellent ideas – but no capacity to put them into practice? Because you don't have your own resources in development, testing, production, assembly and/or system integration? No worries.

Because we can take care of it for you: With PROject, our division for individual project implementation on behalf of customers. Depending on your requirements, either as a complete process chain or as an individual service.

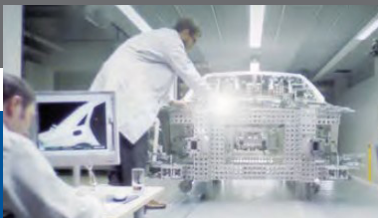
Always unconditionally individual, always on spot for your needs.



Witte in the innovation year 2022 The direction we are heading

With the market presentation of the current multidirectional mobile structure plate FixBase MDD at the end of 2021, Witte already indicated where the journey in the concept and product year 2022 is going: Emphatically further down the path of automation and control technology integration into the system environment of the user.

In the short interview on page 3 of this issue of FIXPOINT, co-partner and head of development Andreas Witte explains which experience and technological advances can be used and expanded on and emphasizes that with all the focus on automation, we will not lose sight of the established mechanical product solutions. Instead, it takes them into the future of clamping devices at Witte through digitization and electrification.



Online and offline:

FixBase in the trade press

Creating headlines in the print and online trade media. Great start and moving in the right direction. Our multidirectional mobile structure plate, Fixbase MDD, is in news feeds and on double header pages as a new reference technology.



Drehen und wenden, wie man will Mobile Strukturplatte mit multidirektionalem Antrieb

Die FixBase MDD ist eine mobile Strukturplatte mit multidirektionalem Antrieb, die in der Lage ist, sich in alle Richtungen zu bewegen und zu drehen.



Increased speed in production planning Shortened process

The latest step in digitization at Witte ensures significant process optimization: the automated data transfer from design to production planning. The new process brings time savings of up to 1.5 days with even greater process reliability.

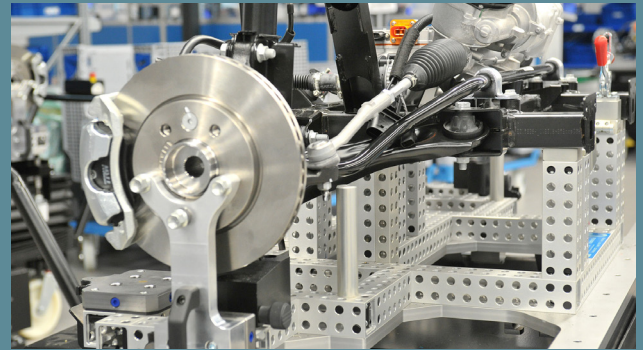
This takes us one step further in our plan to create added value for our customers through digitization. The next step in digitization will involve the automated structuring of the article master data and the optimization of the bill of materials creation.



The all-rounder ALUFIX

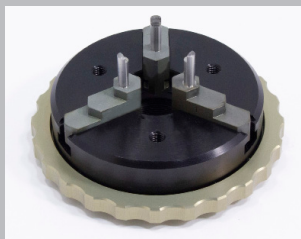
The clamping system ALUFIX is not only an excellent solution for the building of measuring devices.

The modular ALUFIX concept is now being used more and more in the construction of assembly devices. For example, for axle mounts in the automobile assembly area (photo). It also scores here with its uncomplicated variety and cost-saving retooling capability.



Increased performance with keyless chucks Significant added value free of charge

In the product year 2022, we are giving our keyless chucks a significant upgrade at no extra cost. We are not leaving it at mere cosmetics, but enriching the new generation with real plus points for practical use.



Witte keyless chucks are used for gripping rotationally symmetrical or elliptical parts.

For example, when testing with 3D coordinate or roundness measuring devices.

In addition to an ergonomically optimized clamping ring, the 2022 generation of our chucks comes with two other innovations: bores in the tops of the jaws for the additional option of inserting clamping pins and threaded bores in the top of the chuck body for screwing in spacers and stops.

The newly designed clamping ring now enables an even easier, more comfortable and sensitive adjustment of the three- and six-jaw chucks.

The additional pin holes in the jaws are used to accommodate graduated retaining/clamping pins that are included as the new standard. This means that a feature that was previously

available as an extra has become standard equipment for the entire current keyless chuck series.

Three additional threaded holes in the chuck body now also allow spacers to be bolted in. Or the application of a side stop that is independent of the movement of the jaws.

Best of all: All upgrades of the new generation of keyless chucks are included at no additional cost compared to the previous ones.

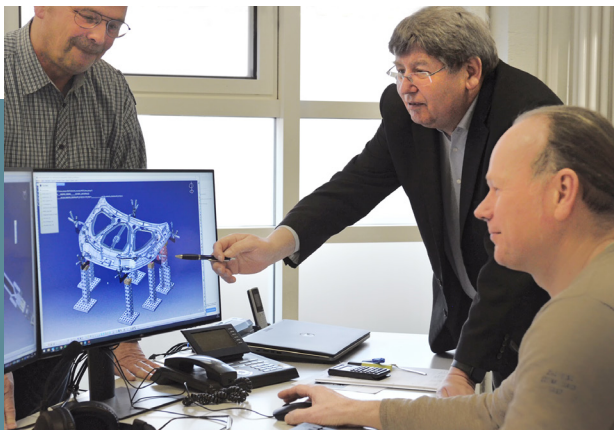
The three- and six-jaw manual keyless chucks from Witte come as a basic set of up to 37 parts consisting of base jaws, reversible jaws and top jaws.

The combination of base jaws and top jaws alone allows for an enormous number of workpiece-specific clamping options.



CAD design per customer order: Bringing ideas into shape

Witte brings customer ideas into shape, develops prototypes and makes them ready for production. The foundation for our performance is our design team, staffed by international development teams and our in-depth experience in mechanical and plant engineering. As well as the transfer of knowledge and skills from over 50 years of global Witte market experience. The native CAD design systems used are CATIA, NX and Solid Works.



Driving force: Andreas Witte „Moving forward in automation and digitization“

As technical director and head of the design and development team, co-partner Andreas Witte (*bottom right picture*) is responsible for the future technological orientation of the company. What is he aiming for?

Mr. Witte, in your role, you have a decisive influence on Witte's direction of product development. Where is the journey going?

Andreas Witte: I would put it a little differently. The market and customer expectations determine the route. My, our task, is to get our users to their goals faster and more reliably than others.

Might be a tough race...

Andreas Witte: Absolutely, because our competitors also have good ideas. However, we undoubtedly see ourselves in pole position when it comes to the speed of innovation and development. It is important for us to use and expand this lead.

Sounds confident and sounds like a plan.

Andreas Witte: Well, with our established, primarily mechanical systems, we have acquired an enormous reputation on the market and will continue to be successful with them in the future.

ALUFIX product upgrade Bullseye!

More value: Witte is converting the entire range of parts for the ALUFIX modular clamping and fixing system to high-quality black anodizing. As a standard and at no extra charge!

Over 80 percent of the most popular items are already available in stock in black. The entire range of components is gradually achieving the usual high ALUFIX availability. Never the less, the "Natural Aluminum" anodizing is still available on request and as an option as long as stocks last.

This is a very solid business, but above all experience foundation. These systems are continuously being comprehensively electrified and digitized wherever possible and sensible. This is the one direction for 2022...

And strategy number 2?

Andreas Witte: Absolutely, and with an extraordinarily large emphasis on automation. It is already the current focus of development at Witte and will be further promoted in the future.

We are ideally positioned for this. Because we have both the experience of traditional technology and the resources and skills for its transformation into automated solutions in-house.

Also to a large extent for the development of completely new concepts and products. Including their integration into the user's existing systems, also into higher-level / industrial control systems.

A recent example of this...?

Andreas Witte: For example, the FixBase MDD, our new generation of mobile structural plates with multidirectional drives. It combines accumulated know-how with literally trend-setting automation competence.

So, equipped with enough answers for the future?

Andreas Witte: I think so. Certainly for existing customers, for whom Witte is the quintessence of precision and quality for good reasons.

But also for customers from completely new areas of application, which we open up with our possibilities. With our automated solutions of the future and with the wide range of offers of our PROject concept - the individual services on behalf of the customer requirements.





COHN Spiralfedern + Gerätebau GmbH: More than 30,000!

COHN Spiralfeder + Gerätebau GmbH has already used more than 30,000 Witte VAC-MAT vacuum mats in its Goettingen head office. The mats can be drilled and milled into without affecting the clamping performance. This allows the milling of breakthroughs, slots and the like. This method can also be used to machine contours and chamfers – otherwise only possible with custom made / special chucks. The absolutely perfect solution for COHN.

Hot news from Witte:

Up to 200 degrees Celsius heatable micro- porous vacuum chucks

Our hottest novelty: Vacuum clamping plates with microporous material that can be heated up to 200 degrees Celsius. With this peak value, the innovation meets complex requirements in the high-tech sector.

Core elements of the microporous plates are a new heating rod solution and a sophisticated programmable controller. In addition, the free and independent covering of plate segments with different temperatures and suction forces.

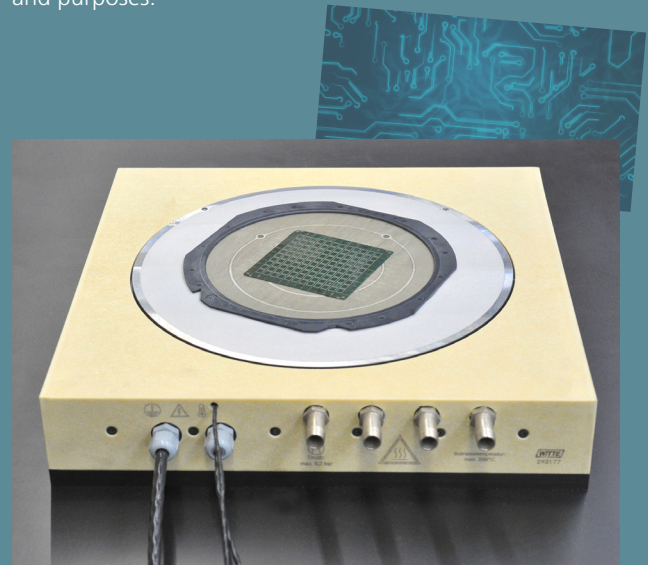
This flexibility in connection with an extremely harmonious surface temperature pattern recommend the new chucks especially for use in high-tech applications. For example, when printing RFID foils or when measuring under the influence of temperature, for example of carrier layers for flexible mobile phone displays etc.

Microporous vacuum clamping plates from Witte guarantee an absolutely „flat“ clamping or holding of the test part. Thin materials are not held by suction holes, suction grooves, etc., which eliminates the risk of deformation. The

low weight and precision of the microporous plates also score points, especially in automated processes.

The pressure distribution in the special structure of the plates enables even load-bearing capacities, even if the surface is only partially covered. This means that workpieces of different sizes can also be fixed on the same plate.

The new aluminum plates with integrated microporous surfaces that can be heated up to 200 degrees Celsius are designed and manufactured according to individual customer specifications and purposes.



Germany
Witte Barskamp GmbH & Co. KG
Horndorfer Weg 26-28
D-21354 Bleckede
Germany
Tel.: +49 (0)5854/89-0
Fax: +49 (0)5854/89-40
E-Mail:
info@witte-barskamp.de
www.witte-barskamp.de

Asia
Witte Far East Pte Ltd
20 Boon Lay Way
01 – 170
Singapore 609967
Singapore
Tel.: +65-6248 5961
Fax: +65-6898 4542
E-Mail:
info@witteasia.com
www.witteasia.com

USA & Canada
Witte LP
2220 Northmont Pkwy, Suite 250
Duluth, Georgia 30096
USA
Phone: +1 (770) 982 99 32
Fax: +1 (770) 982 99 28
E-Mail:
info@witteamerica.com
www.witteamerica.com

Mexico
Horst Witte de Mexico
S.A. de C.V., c/o Linco
Paseo Opera 4 Int 112-2
Lomas de Angelopolis
San Andres Cholula,
Puebla 72830, Mexico
Phone: +52 222563-7929
E-Mail:
info@wittemexico.com
www.wittemexico.com