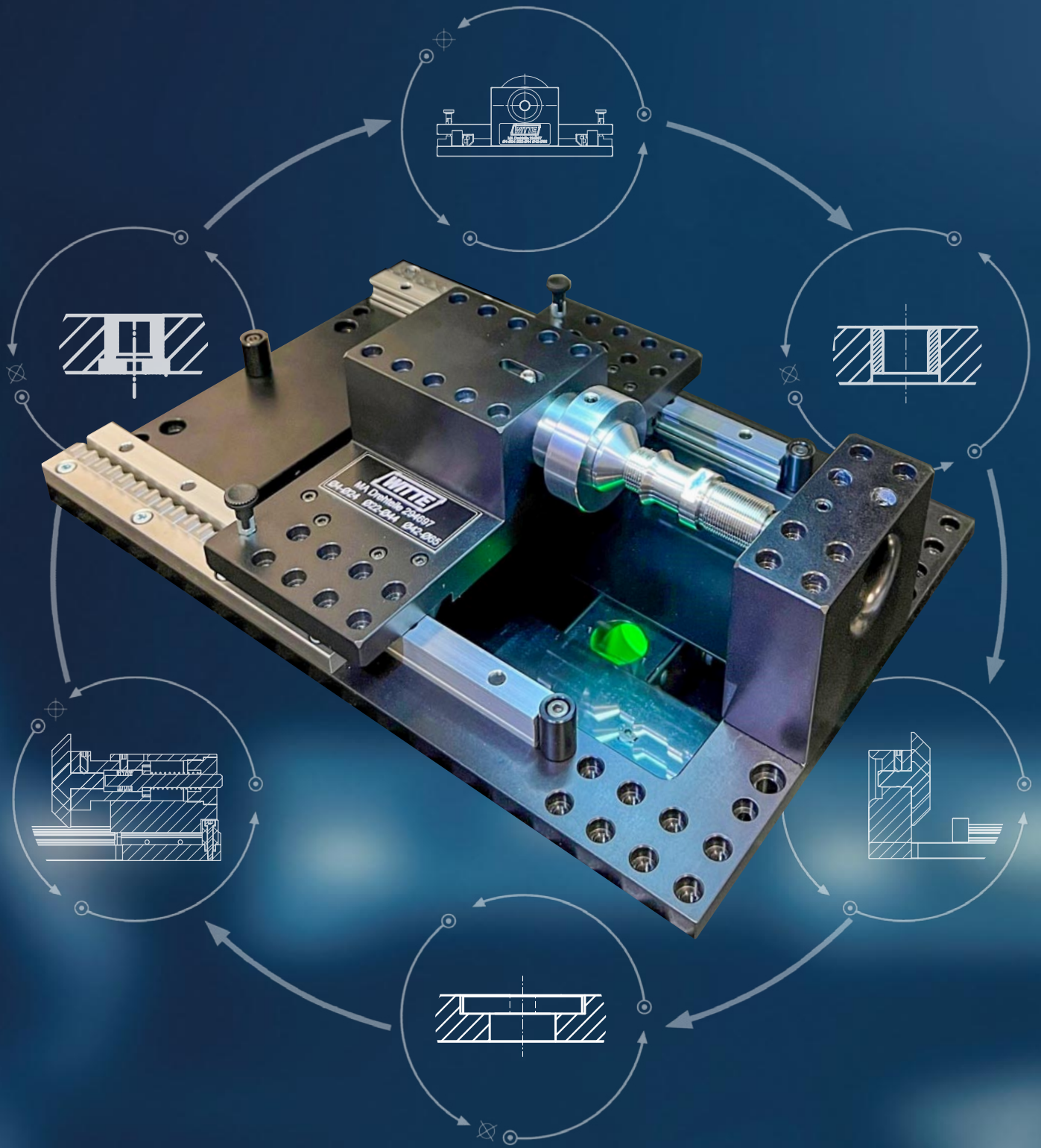


Combined Measuring Fixture

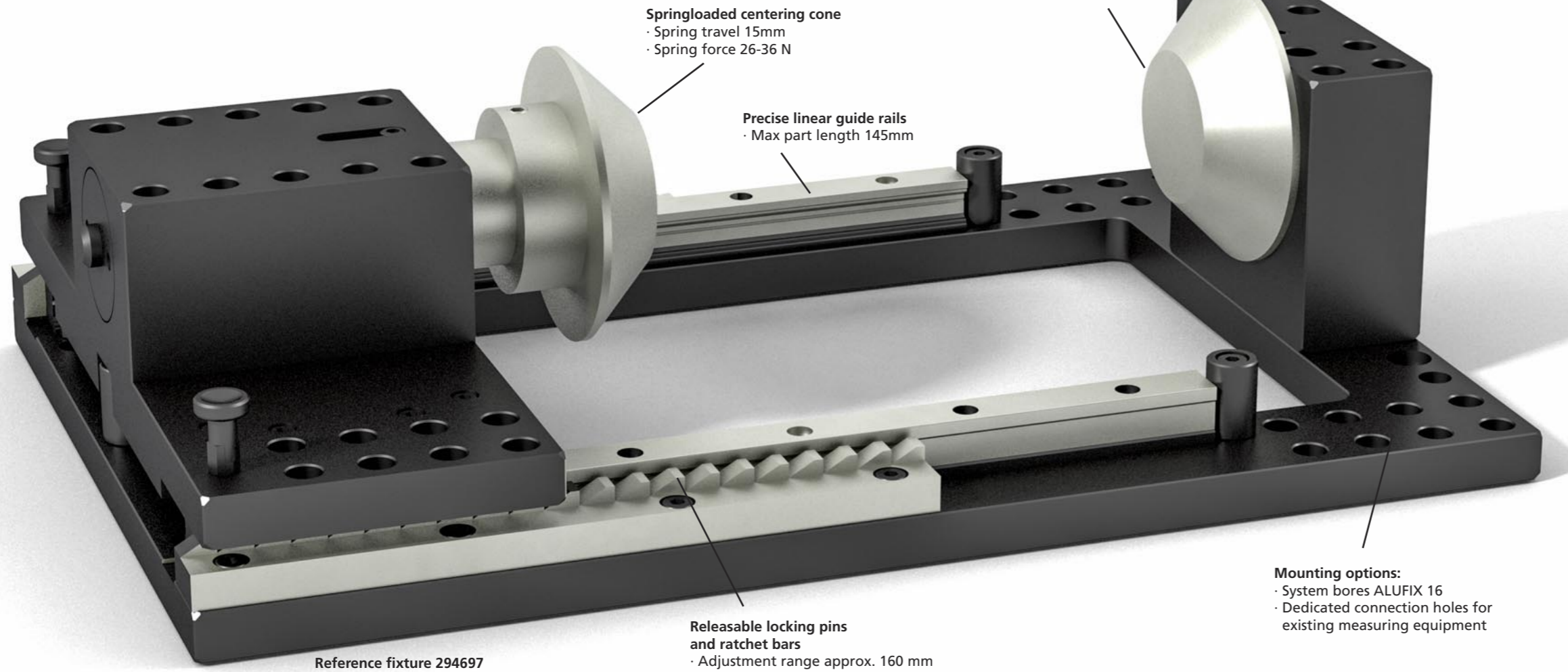
for transmitted light and multi sensor machines



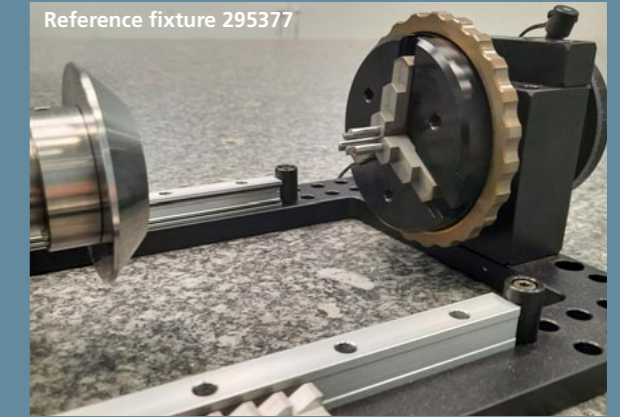
for easy fast fixation of i.e. turned parts and pipes

Combined Measuring Fixture for transmitted light and multi sensor machines

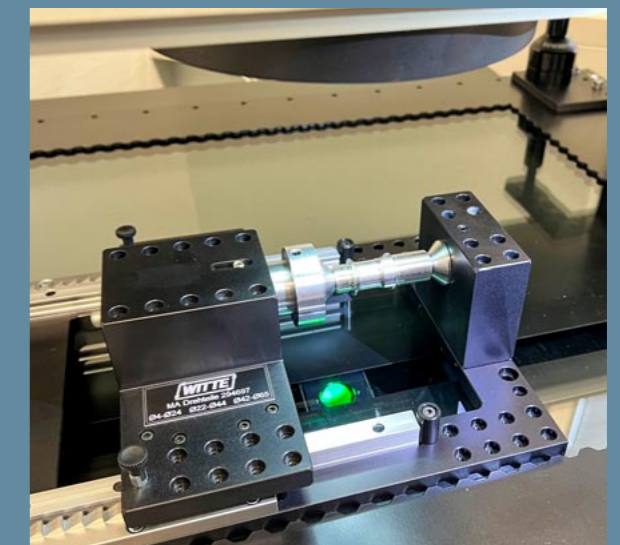
for easy fast fixation of i.e. turned parts and pipes



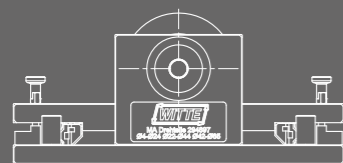
Optional version with rotary and lockable keyless chuck



Optimized for special use on transmitted light and multi-sensor machines



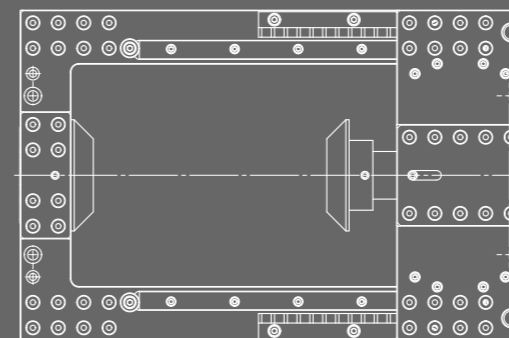
Front view



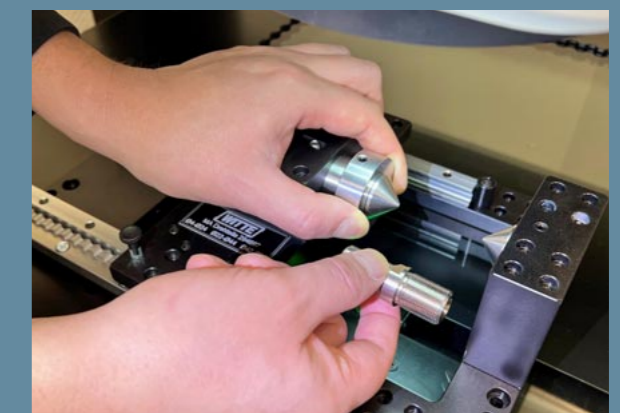
Sectional side view, unit height approx. 95 mm



Top view, main dimensions 320 x 208 mm



Easy tool and part change thanks to a spring-loaded centering cone





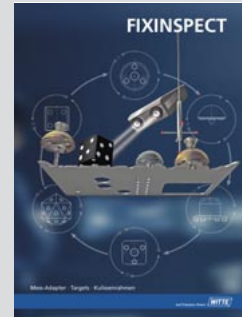
ALUFIX Modular Fixturing Systems



PROject Project implementation made to order



ALUFIX XS Modular fixturing system for optical measuring and checking instruments



FIXINSPECT® Measuring accessories Optical / tactile systems



Vakuüm Spannsysteme Vacuum Clamping Systems

Witte: Fixed on precision

Germany
Witte Barskamp GmbH & Co. KG
Horndorfer Weg 26-28
D-21354 Bleckede
Germany
Tel.: +49 (0)5854/89-0
Fax: +49 (0)5854/89-40
E-mail:
info@witte-barskamp.de
www.witte-barskamp.de

Asia
Witte Far East Pte Ltd
20 Boon Lay Way # 01 – 170
Singapore 609967
Singapore
Tel.: +65-6248 5961
Fax: +65-6898 4542
E-mail:
info@witteasia.com
www.witteasia.com

USA & Canada
Witte LP
2220 Northmont Pkwy, Suite 250
Duluth, Georgia 30096
USA
Phone: +1 (770) 982 99 32
Fax: +1 (770) 982 99 28
E-mail:
info@witteamerica.com
www.witteamerica.com

Mexico
Horst Witte de Mexico
S.A. de C.V., c/o Linco
Paseo Opera 4 Int 112-2
Lomas de Angelopolis San Andres
Cholula, Puebla 72830, Mexico
Phone: +52 (222)563-7929
E-mail:
info@wittemexico.com
www.wittemexico.com