

# Assembly instructions

## Quick change coupling

AF25 / AF40 / AF50

### Safety instructions:

Take care during assembly that no danger of damage to neighbouring parts exists!

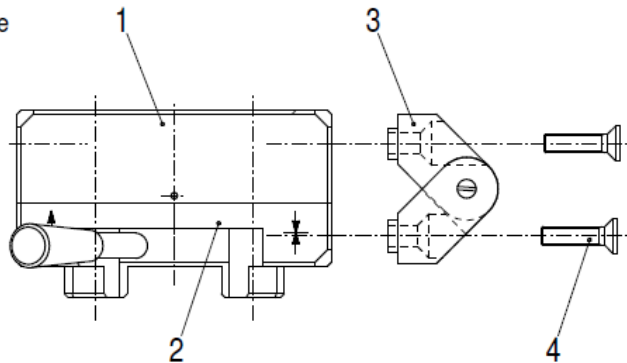
Wenn using quick change couplings always wear gloves to protect hands from injuries which can be caused by surrounding sheet metal parts!



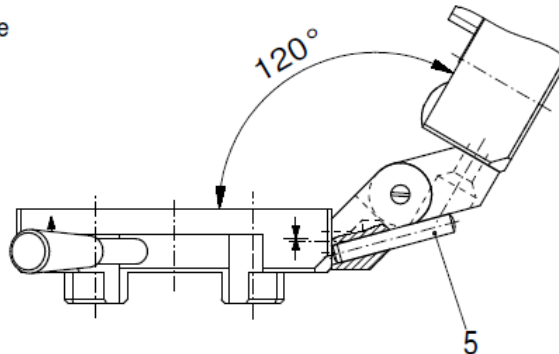
### Protective gloves

To protect hands from friction, scratches punctures or deeper injuries.

Opening angle  
0°- 180°



Opening angle  
0°- 120°



### Assembly instructions:

Mounting hinge to top part and base to make a quick folding coupling

1. Locate hinge (Pos.3) in top part (Pos.1) and base (Pos.2).
2. Screw in 4x countersunk screws (Pos.4).
3. For opening angle 0°-120° put in dowel pin (Pos.5) as a stop and fix with glue.

### Torque recommendations:

System	M	Torque
AF25	M3	2 Nm
AF40	M5	3 Nm
AF50	M6	5 Nm